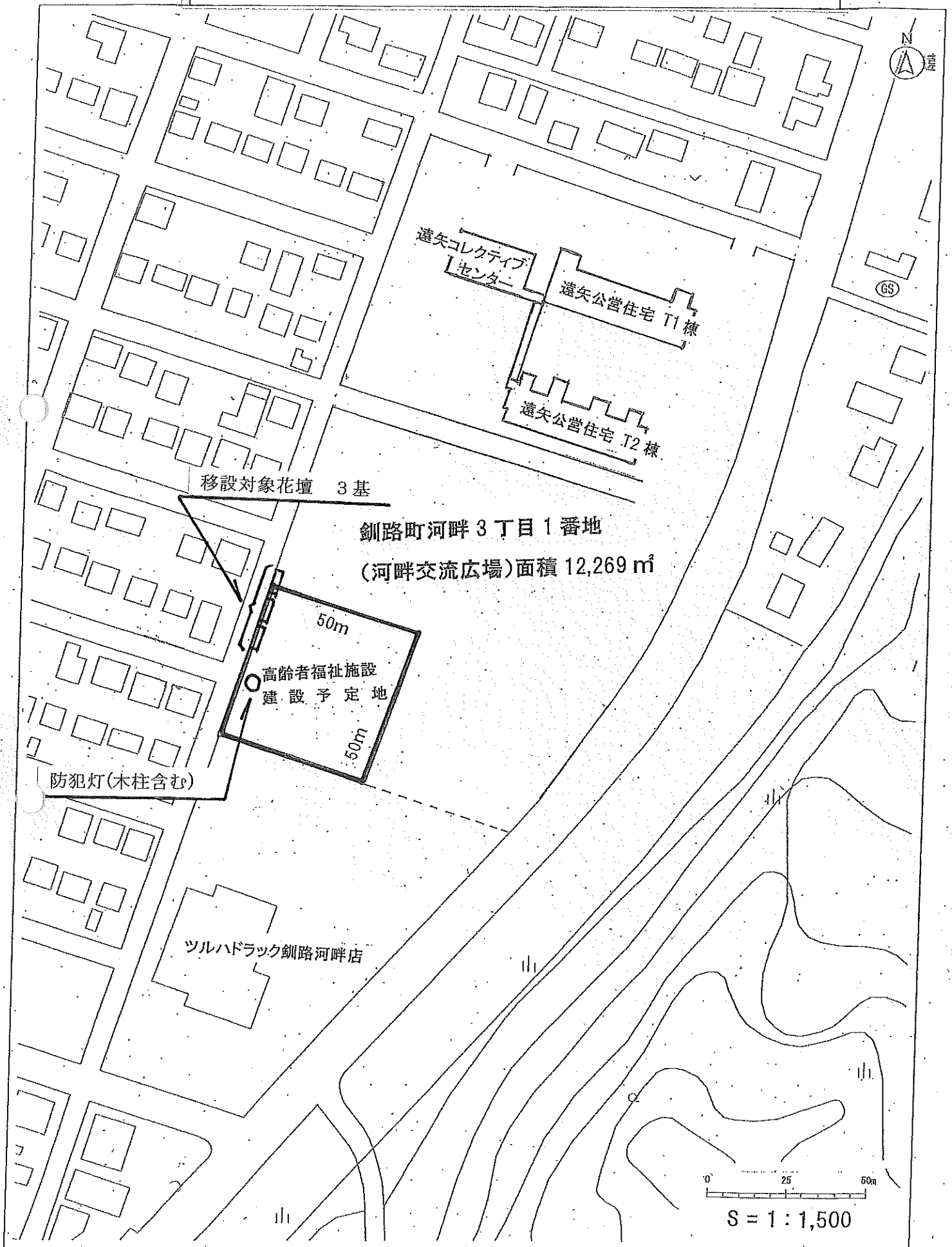
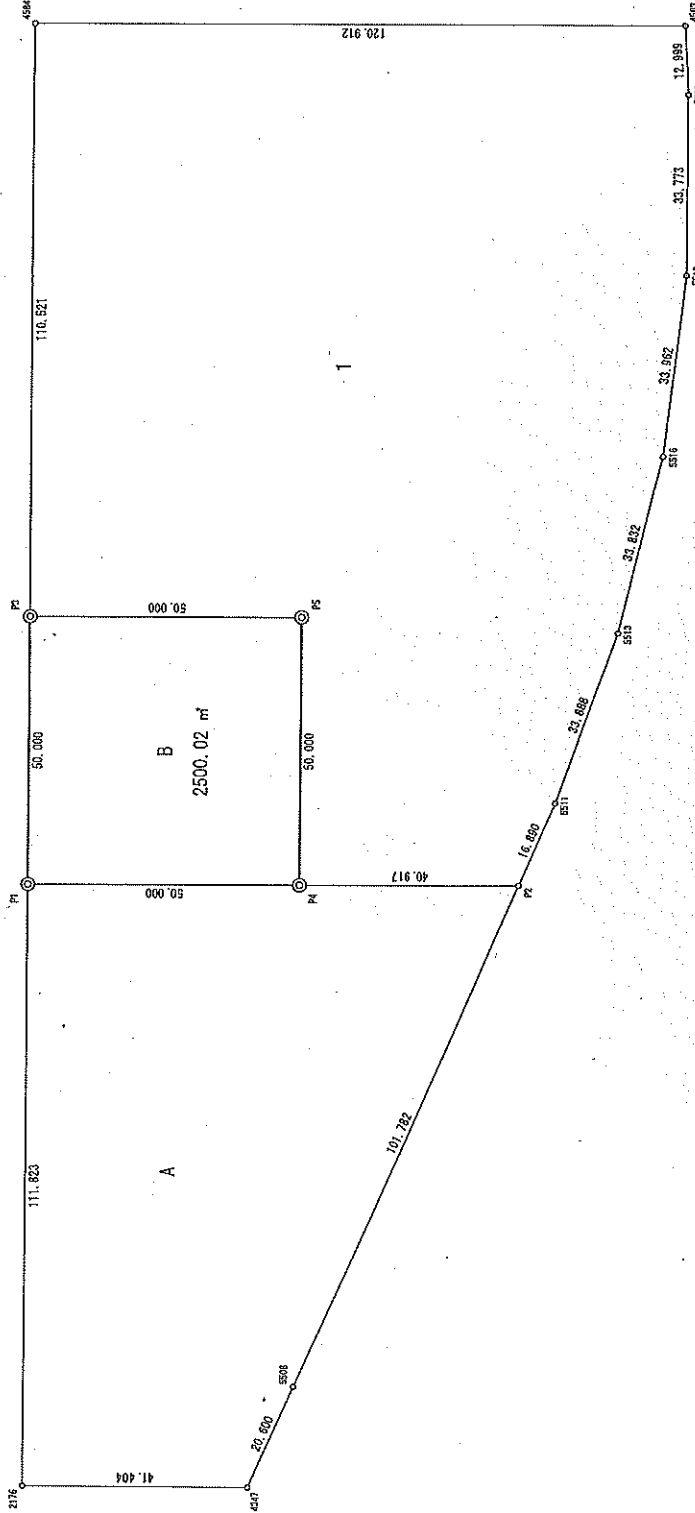


高齢者福祉施設建設予定地





求積表

地番	Xn	Yn	Xn - (Yn+1 - Yn-1)	Yn+1 - Yn-1	Xn · (Yn+1 - Yn-1)
P3	-107380.305	16962.554	-13.236	1421285.71680	
4584	-107215.240	16966.850	149.256	-1601473.221440	
4583	-107312.710	17111.810	111.610	-11977171.583100	
5520	-107325.270	17108.460	-13.910	1492884.505700	
5518	-107357.350	17097.900	-24.870	2669977.294500	
5516	-107388.150	17093.590	-32.080	3445011.852000	
5513	-107416.940	17065.820	-38.830	4170989.780200	
5511	-107443.890	17044.760	-32.352	5393111.693450	
P2	-107456.090	17034.460	-50.189	6476011.788480	
P4	-107443.353	16994.571	-22.382	2512240.479846	
P5	-107395.821	17010.086	-32.017	3438492.000957	
合計				31380.327573	
合計面積				15590.1637855	
地積				15590.16	

地番	Xn	Yn	Xn - (Yn+1 - Yn-1)	Yn+1 - Yn-1	Xn · (Yn+1 - Yn-1)
2176	-107354.140	16912.340	-4.631	497960.622940	
P1	-107427.837	16947.039	82.231	-8833896.464347	
P4	-107443.353	16994.571	86.429	-9288221.556437	
P2	-107456.050	17033.468	-28.151	3132451.313550	
5508	-107591.740	16965.420	-81.798	8795881.268520	
4347	-107547.080	16951.570	-52.080	5708595.006400	
合計				14802.170028	
合計面積				7401.0850130	
地積				7401.08	

地番	Xn	Yn	Xn - (Yn+1 - Yn-1)	Yn+1 - Yn-1	Xn · (Yn+1 - Yn-1)
P1	-107427.837	16947.039	-32.017	3439517.057229	
P3	-107380.305	16962.554	63.047	-6770005.083335	
P5	-107395.821	17010.086	32.017	-3438492.000957	
P4	-107443.353	16994.571	-50.047	6773951.076591	
合計				5000.043528	
合計面積				2500.0217640	
地積				2500.02	

合計面積 25591.2705635 m²

※ 机上計算値